

EU EXAMPLES
LANDSCAPE IN LITHUANIA: WAYS TO ADDRESS
TODAY'S CHALLENGES

Ramunė Sanderson, CMLI
Principal, Terra Firma LT

Valuing Landscape Conference 2018
University of Greenwich
6-7 September 2018

terrafirmaLT

LANDSCAPE ARCHITECTS



LITHUANIA: FACTS

LOCATION

- Geographical centre of Europe (?!)
- 65 300 sq. km area

LANDSCAPE

- 34% covered by forests
- 4% freshwater lakes and rivers
- 16% country's landscapes are under protection



Historic landscape of Trakai, Galves
lake



Rural landscape, view from Merkinė mound

HISTORY

- Lithuania dates back to 1009
- Due to geopolitical situation country's land use has always lacked stability
- Post 2nd WW occupation by Soviet Union has heavily affected landscape and land use (land nationalization, large scale industrialization to service the whole USSR)
- Re-establishment of land use, land ownership and landscape planning since 1991 till present



Changing Nemunas river landscape (Kaunas Hydro-electric power station dam since 1960)

HISTORY



C 1960's – agricultural mass production to service USSR



Zervynos, South of Lithuania – has retained authentic landscape layout due to poor soils and undulation, not suitable for SSSR mass production

LANDSCAPE

- Heritage landscapes
- Protected natural landscapes
- Damaged landscapes

PEOPLE

- 2,7 million people (shrinking)
- Lack of LA professionals (i.e. 2 LA in Municipality of Vilnius)
- Public awareness and public landscapes



Reformates park and cemetery were excavated and redesigned in a modernist style for a soviet monument in 1973 – what and how to restore?



Užutrakis parterre surrounded by 19 C landscape park by French LA E. F. Andre



Rambynas regional park. View from a 12c Baltic castle mound towards Nemunas river

FAST DEVELOPMENT

- Development of outskirts of major cities
- Infrastructure development
- Fast development of offices, retail and residential real estate in major cities



Masterplan of 534ha of Kaunas free economic zone



5 ha residential development in Paupys, central Vilnius (over 2000 apartments)



Development of Vilnius ring road (west part)

SHORTFALLS



Obstructed public rights of way by landowners in rural landscapes



Frequent floods in cities expose need for SUDS in fast growing major cities. Flood in Vilnius, 2018 Summer



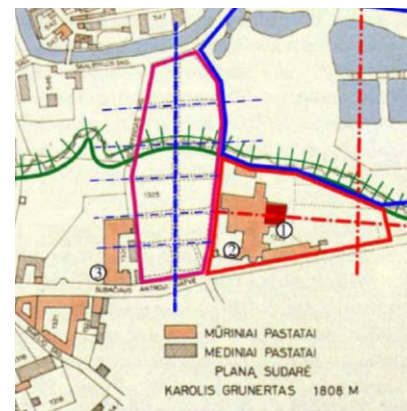
No LCA and LVIA procedures for major developments in outskirts of cities



Development can get away with little or no landscape improvement. Plaza business centre, Kaunas

SUCCESS

EU funds allow to restore important historic parks amongst other numerous public landscape projects



Missionary gardens restoration project in Vilnius. Tender stage

terrafirmaLT

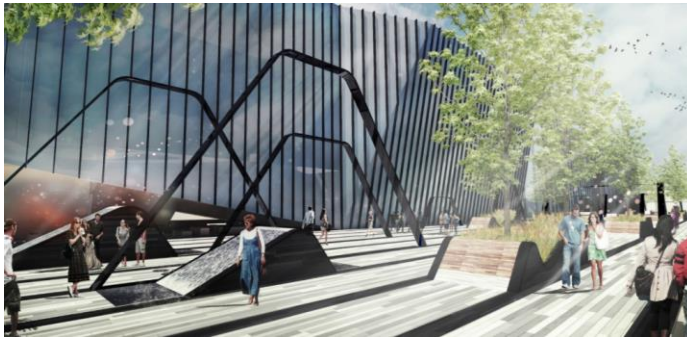
LANDSCAPE ARCHITECTS

SUCCESS

Understood importance of quality landscapes by real estate developers



Quadrum Business City public space in Vilnius. Completed in 2016



Žalgiris promenade in Vilnius. Under construction

SUCCESS

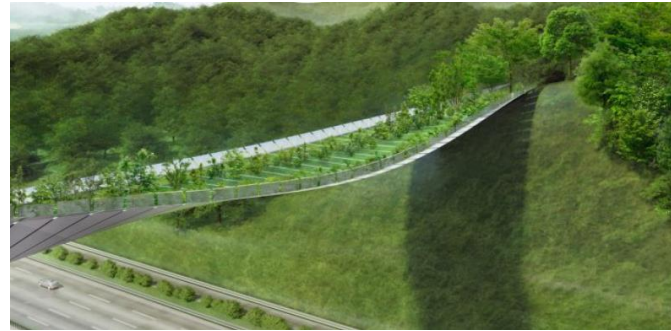
Increased awareness for public consultation and public participation in landscape design process - a new beginning, but has begun already



Public consultation, restoration of historic Reformatas park in central Vilnius



14th Council of Europe's special mention for Utena town landscape planning and implemented projects

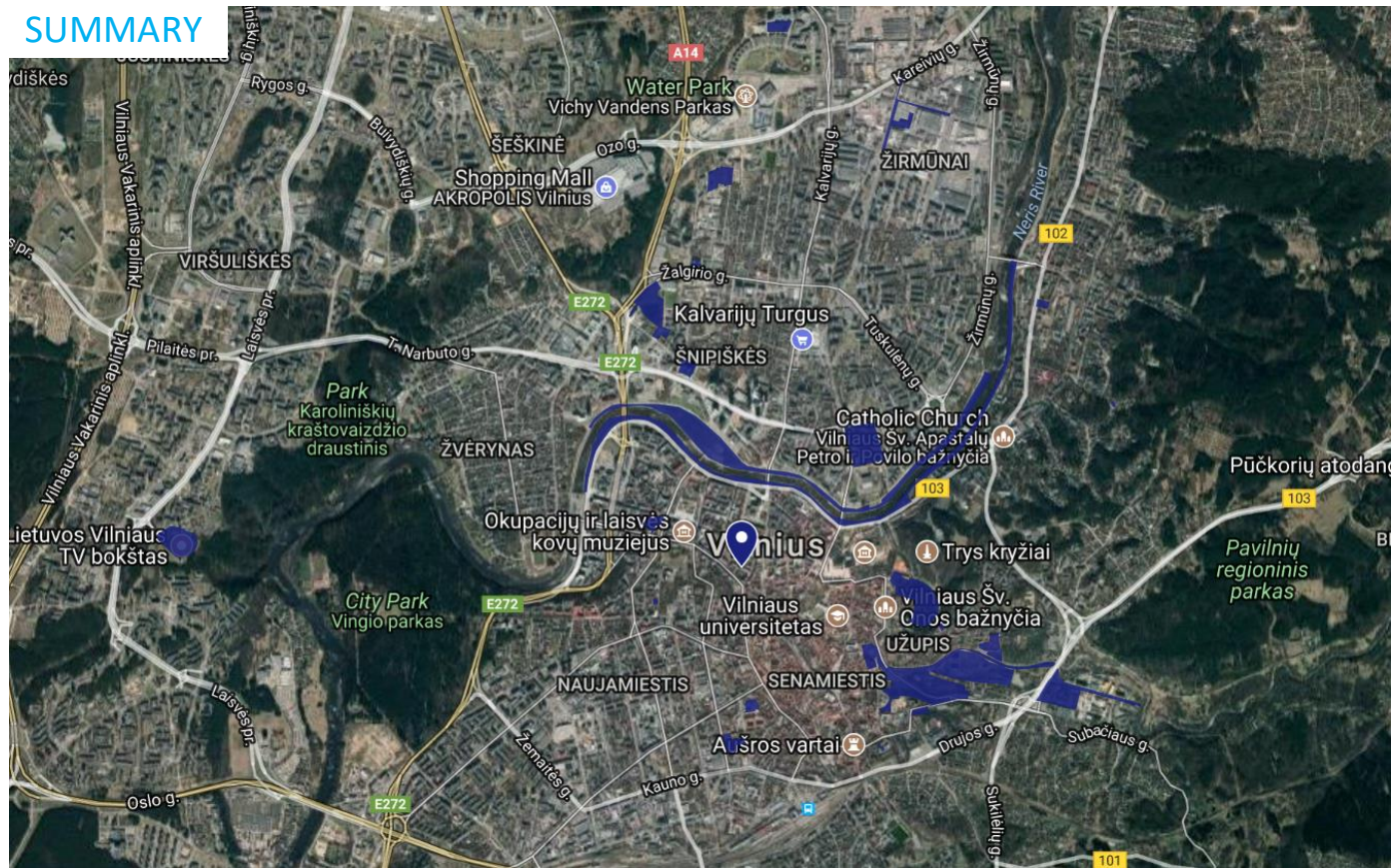


Lithuanian team won landscape inspired bridge design and build competition in Seoul, 2018

terrafirmaLT

LANDSCAPE ARCHITECTS

SUMMARY



Vilnius areal, Terra Firma LT projects since 2014