

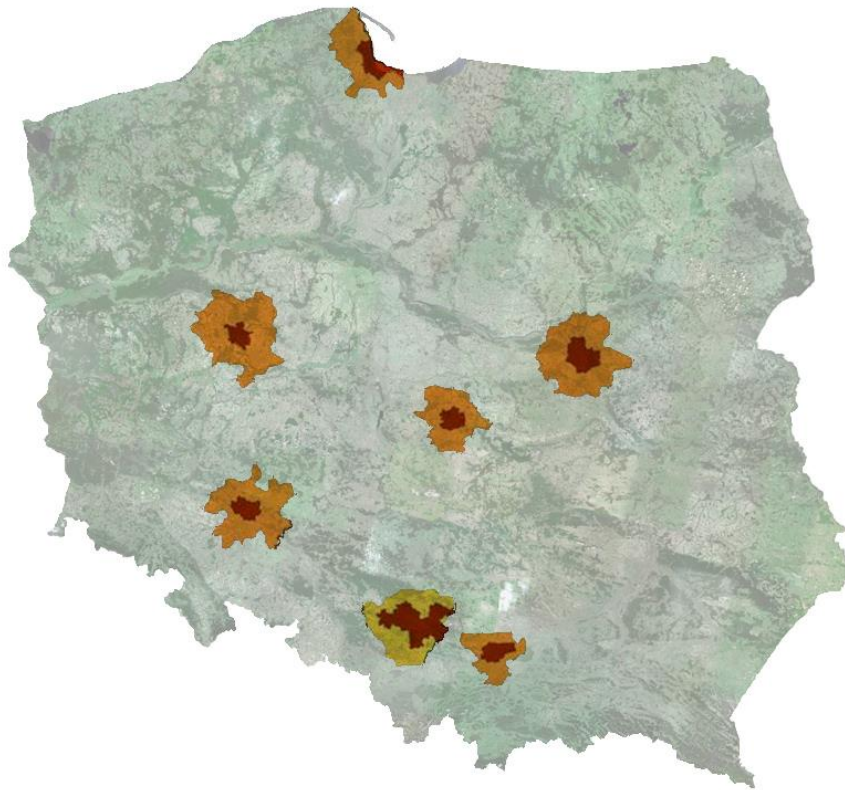
**Urszula Forczek –Brataniec**

IFLA Europe,  
Polish Landscape Architecture Association (SAK)  
Cracow University of Technology (PK) eM4

**Visual landscape,  
the landscape management in the protected areas  
and everyday landscape in Poland**

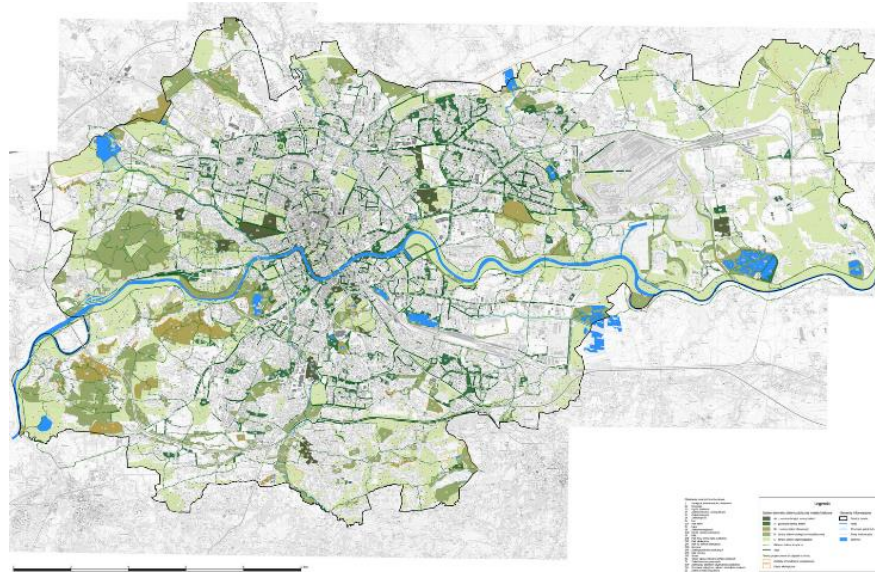


## The changes of the Polish Landscape



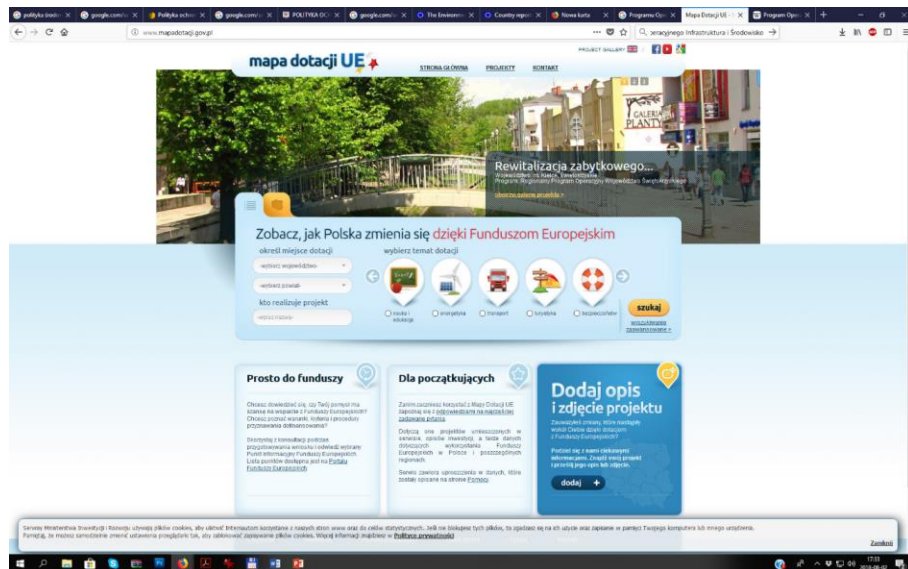
# Metropolitan areas

## Directions of development and management of green areas in Krakow for 2017-2030



# Small towns

## application of the Regional Development Programs (EU Funds)



# Open Landscape

significant changes to the regulations regarding agricultural land

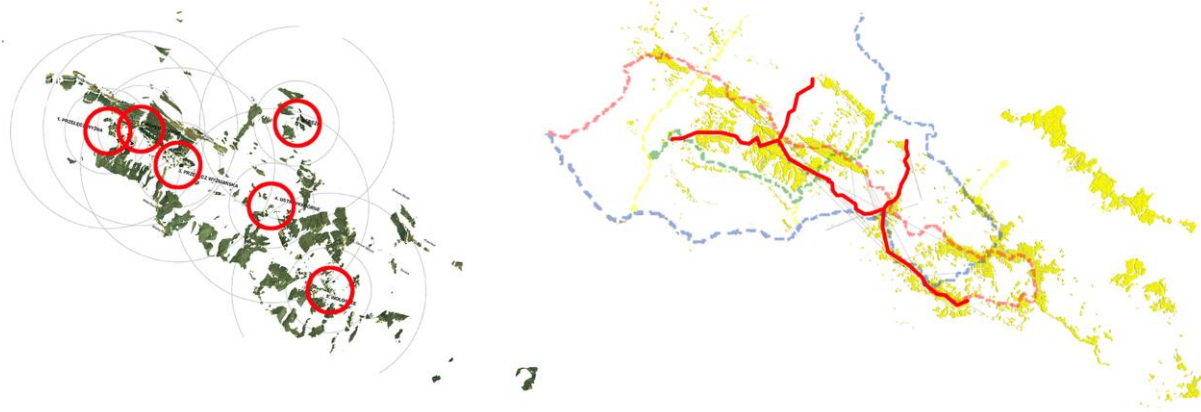


## System of protected areas





## Protection Plans Structure



# Visual landscape versus spatial changes



13th, 14th century – a wave of Polish settlement development in river valleys



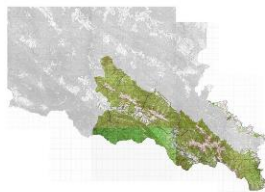
15th century- a wave of Wallachian settlement people come from the south and wander along Carpathian mountain range bringing shepherd culture



16th-19th century agriculture development the Bieszczady mountains a melting pot of cultures: Highlander, Lemko, Boikovsky, and Hutsul



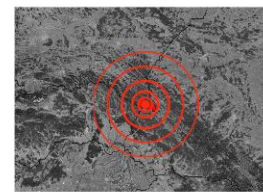
1947 -1951 Resettlement after World War II, Bieszczady mountains become deserted, 150.000 people are resettled



1973  
Establishment of the National Park



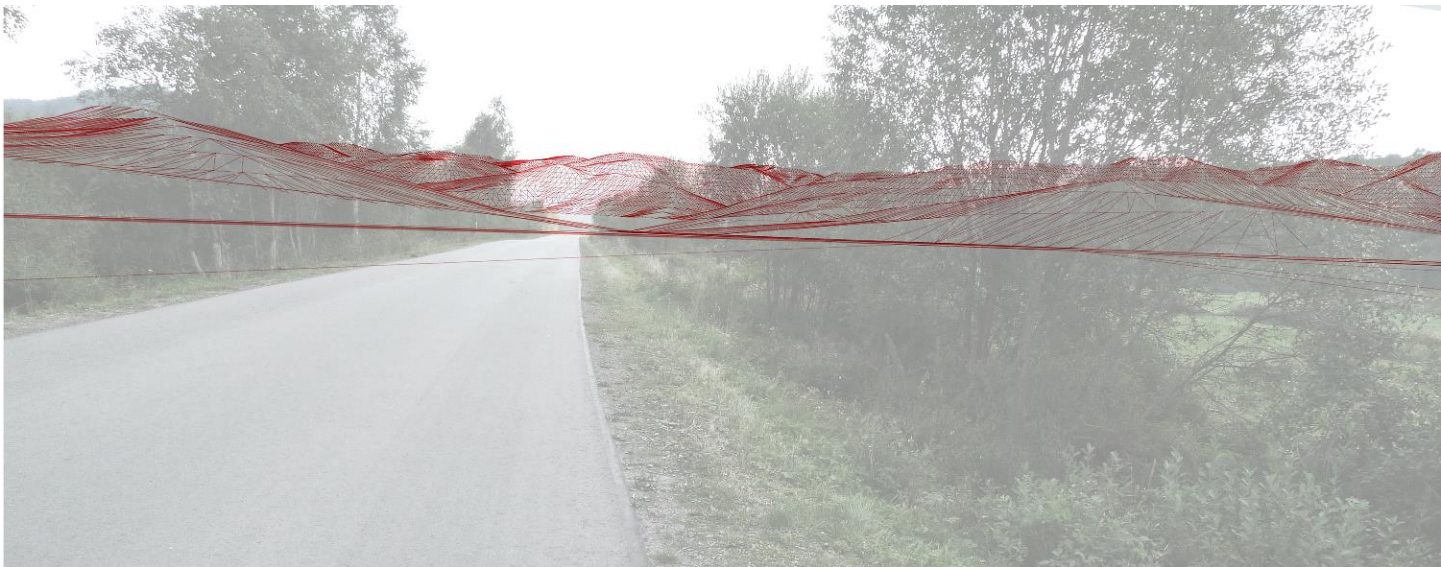
1973-2000  
Natural resources protection concentration



2001  
Initial plans of cultural landscape clearing



## Visual analysis

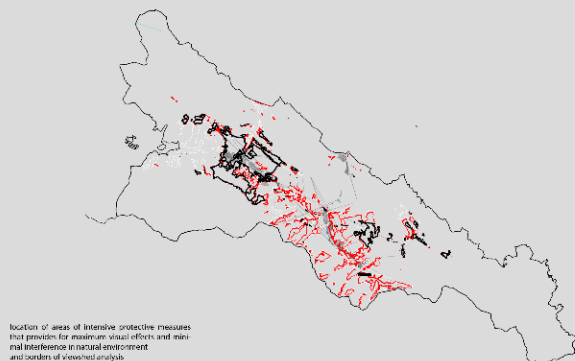


## ...as a tool of spatial management



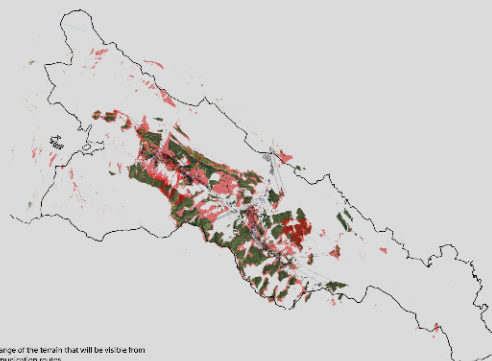
# Degree of visibility concept

## RESULTS: LOCATION OF AREAS OF PROTECTIVE MEASURES AND SPATIAL EFFECT OF PLAN IMPLEMENTATION

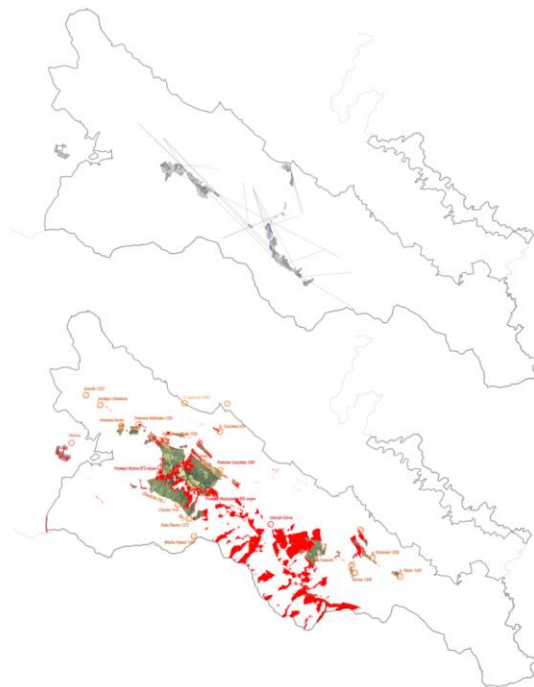


proportional and average summary of the visibility zones

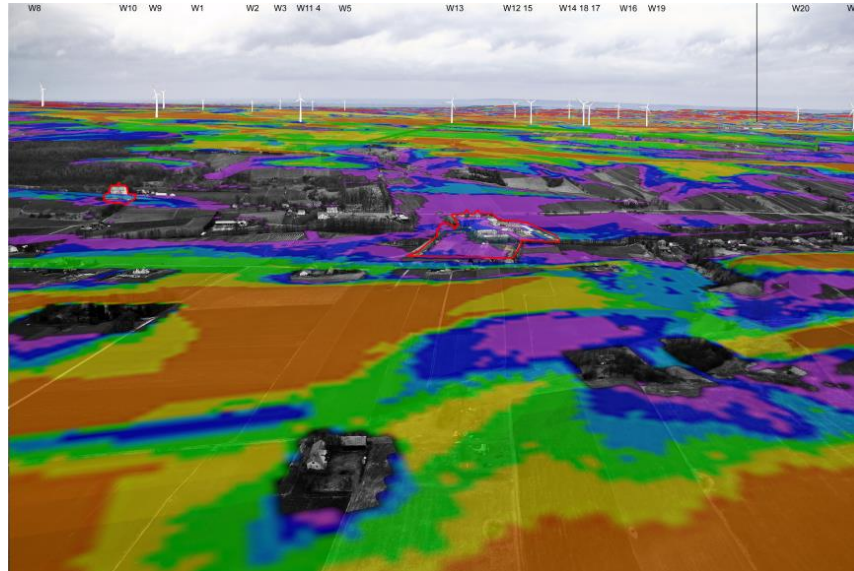
	total visibility zone	visibility zone	visibility zone	visibility zone	visibility zone
visibility zone	100%	100%	100%	100%	100%
visibility zone	100%	100%	100%	100%	100%
visibility zone	100%	100%	100%	100%	100%
visibility zone	100%	100%	100%	100%	100%
visibility zone	100%	100%	100%	100%	100%



The applied research method allows us to gain precise data regarding location of areas of protective measures taking into account minimal interference in view of priorities of environmental protection as well as economic factors. Concentrated measures protecting from succession will allow us to preserve the most valuable pieces of cultural landscape and will ensure their visual accessibility from the main tourist routes. The concept allows us to expose as fully as possible multithreaded beauty of the Bieszczady Mountains landscape within the context of protection priorities of the National Park

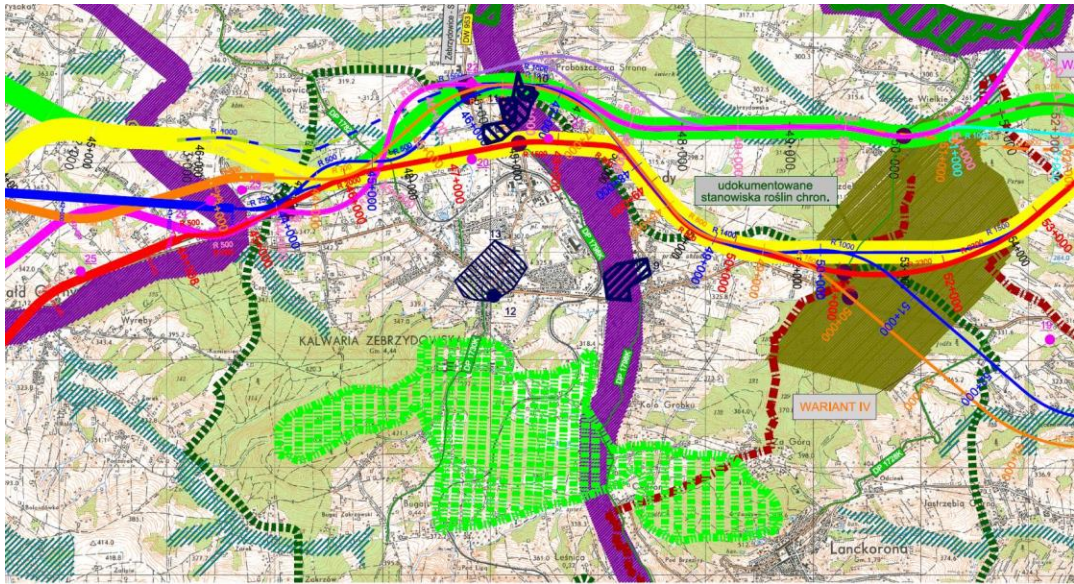


## From protection areas to everyday landscapes





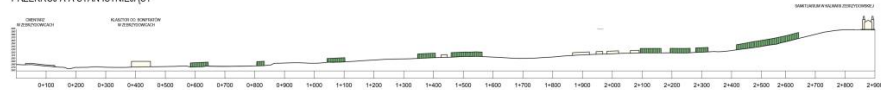




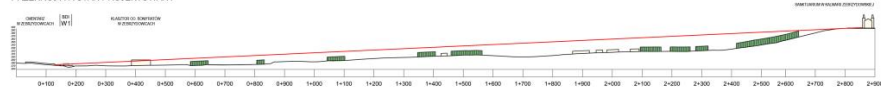
**WARIANT 1**

WPŁYW PRZEBIEGU BDI NA OŚ WIDOKOWĄ: KLASZTOR OO. BONIFRATRÓW - ZABYTKOWY ZESPÓŁ KLASZTORNY W KALWARII ZEBRZYDOWSKIEJ. RYS. 2

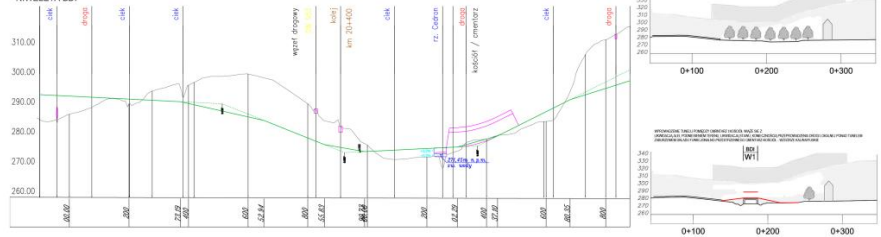
## PRZESZCZOTKI A-A STAN ISTNIEJĄCY



## PRZESZCZOTKI A-A STAN PROJEKTOWANY



## NIVELETA BDI



**Red Book of Polish Landscape (2002)**

**Landscape act (2015)**

**Recommendations in the field of landscape analysis guidance (2018)**

## bibliography and source materials

Bogdanowski J., Łuczyńska-Bruzda M., Novák Z., *Landscape Architecture*. PWN, Warsaw – Krakow 1979.

Forczek-Brataniec U., *The View from the Road; Landscape in Dynamic Perception*. Elamed, Katowice 2008.

*Guidelines for Landscape and Visual Impact Assessment third edition*, Landscape Institute and Institute of Environmental, Management and Assessment, Routledge, London 2013.

Litton R.B., *Descriptive Approaches to Landscape Analysis* [in:] *Proceedings of Our National Landscape, A Conference on Applied Techniques for Analysis and Management of the Visual Resource*, Gen. Tech. Rep. PSW-GTR-35. Berkeley, CA. Pacific Southwest Forest and Range Exp. Stn., Forest Service, U.S. Department of Agriculture, Incline Village 1979, pp. 77-87.

*A landscape and conservation study for the national road No.52 nearby protected zones of the UNESCO site in Kalwaria Zebrzydowska*, led by: U. Forczek-Brataniec, co-authors: B. Grajner, P. Byrski. Krakow 2009/2010 An annex to A landscape and conservation study for the national road No.52 nearby protected zones of the UNESCO site in Kalwaria Zebrzydowska, by U. Forczek-Brataniec, Krakow 2010.

*The Report on Protection of Scenic values of the Bieszczady National Park*, led by: U. Forczek-Brataniec PhD. Eng., co-author: P. Nosalska MSc. Eng., landscape architecture., Krakow 2010/2011.

*A landscape and view study for the planned construction of a wind farm complex in the Gołcza municipality*, the team: led by: Z. Myczkowski PhD Eng. of Architecture, authors: U. Forczek-Brataniec PhD. Eng., P. Nosalska MSc. Eng., landscape architecture., conservation and planning: A. Siwek MA, Krakow 2012.

**Thank you**

Urszula Forczek-Brataniec

IFLA Europe

Institute of Landscape Architecture

Faculty of Architecture

Cracow University of Technology

Landscape Architecture Association SAK

@: [urszulafb@interia.pl](mailto:urszulafb@interia.pl)

m: 0048601578338

s: urszulafb