

Canada's Capital

Why natural capital accounting is vital for urban growth

Dr Mark Kristmanson, National Capital Commission, Ottawa, Canada

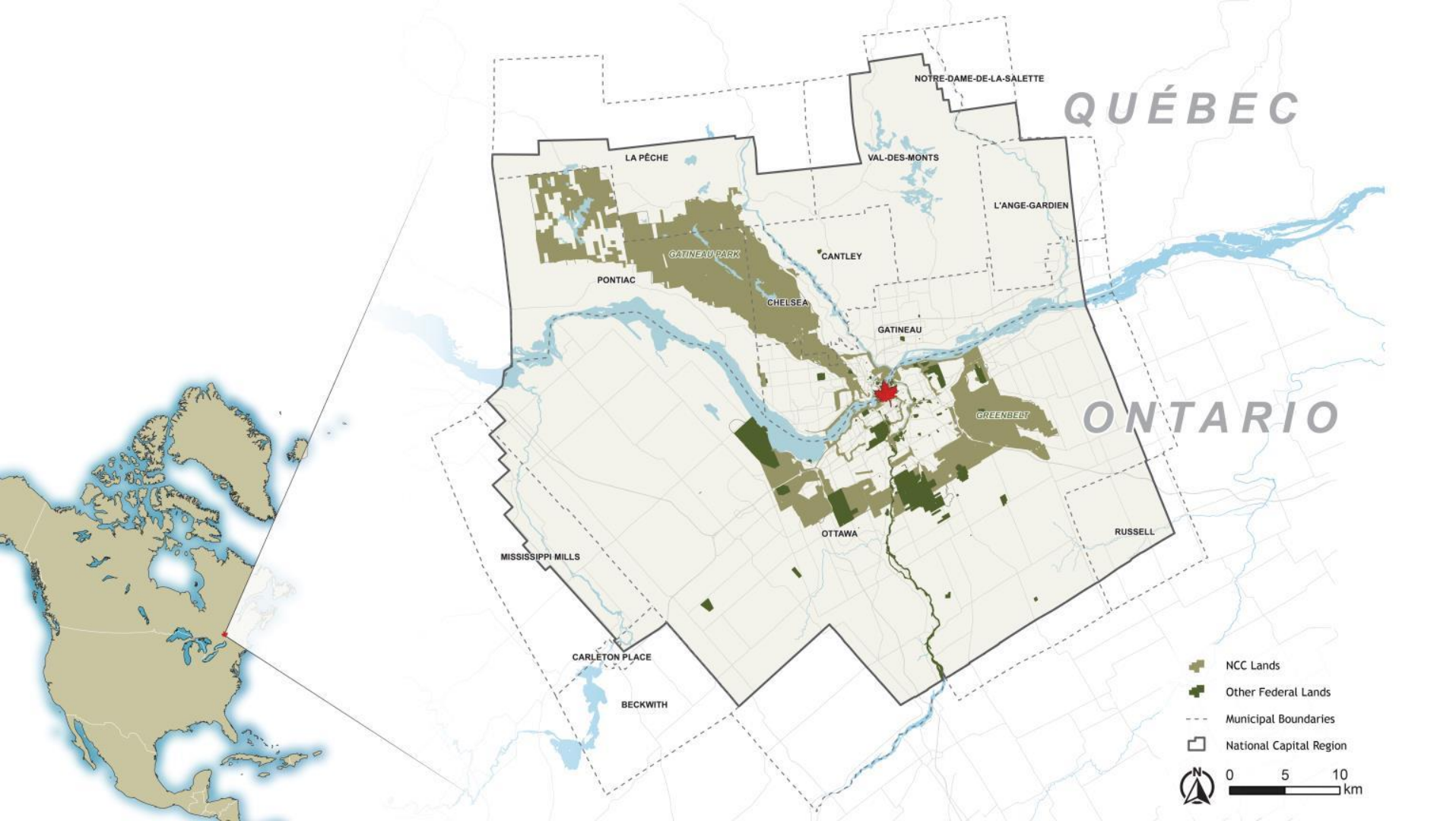


#VLConf2018



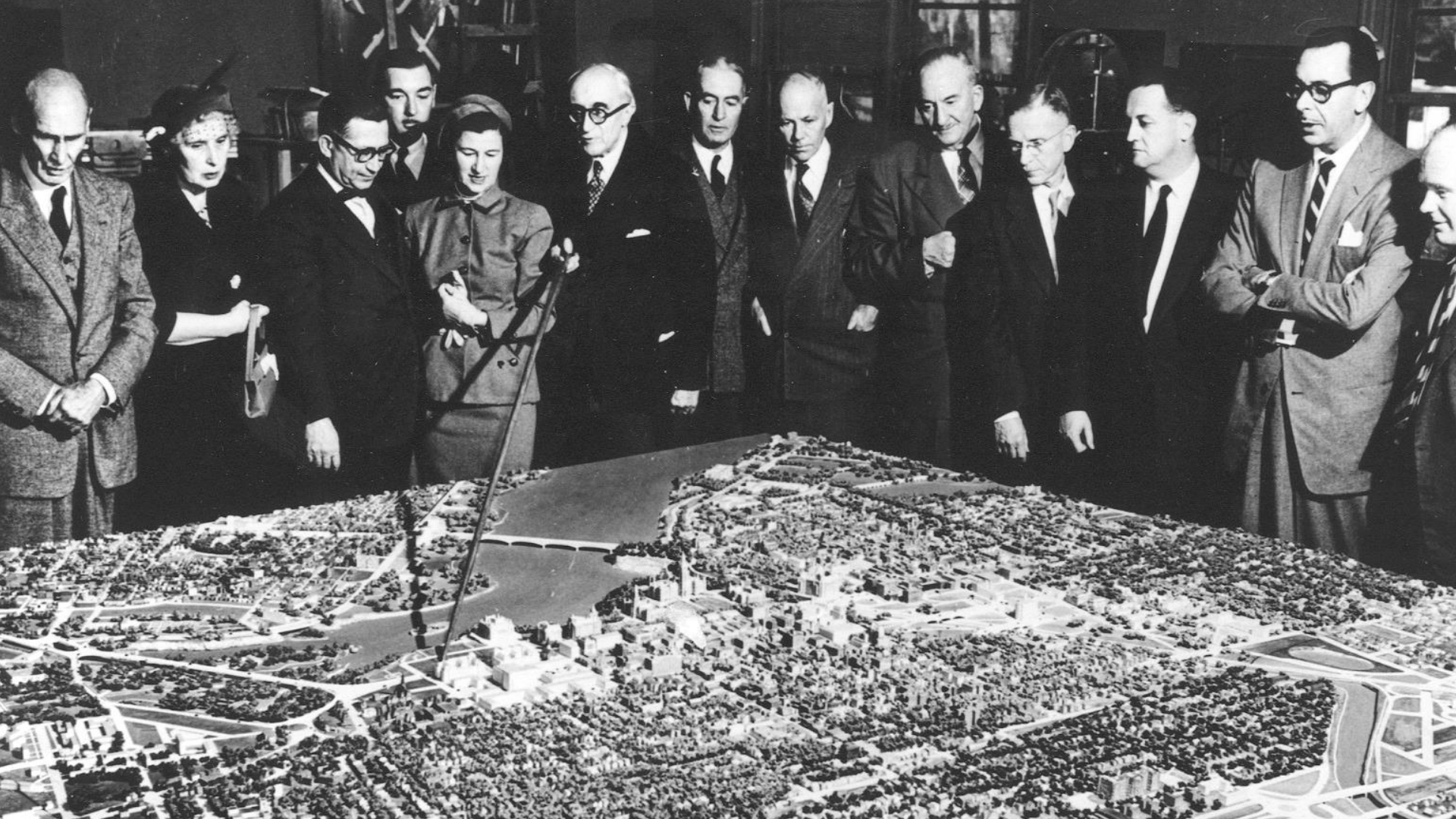
Canada's Capital: Towards a Landscape of Sustainability

**Dr. Mark Kristmanson,
National Capital Commission
6 September 2018**

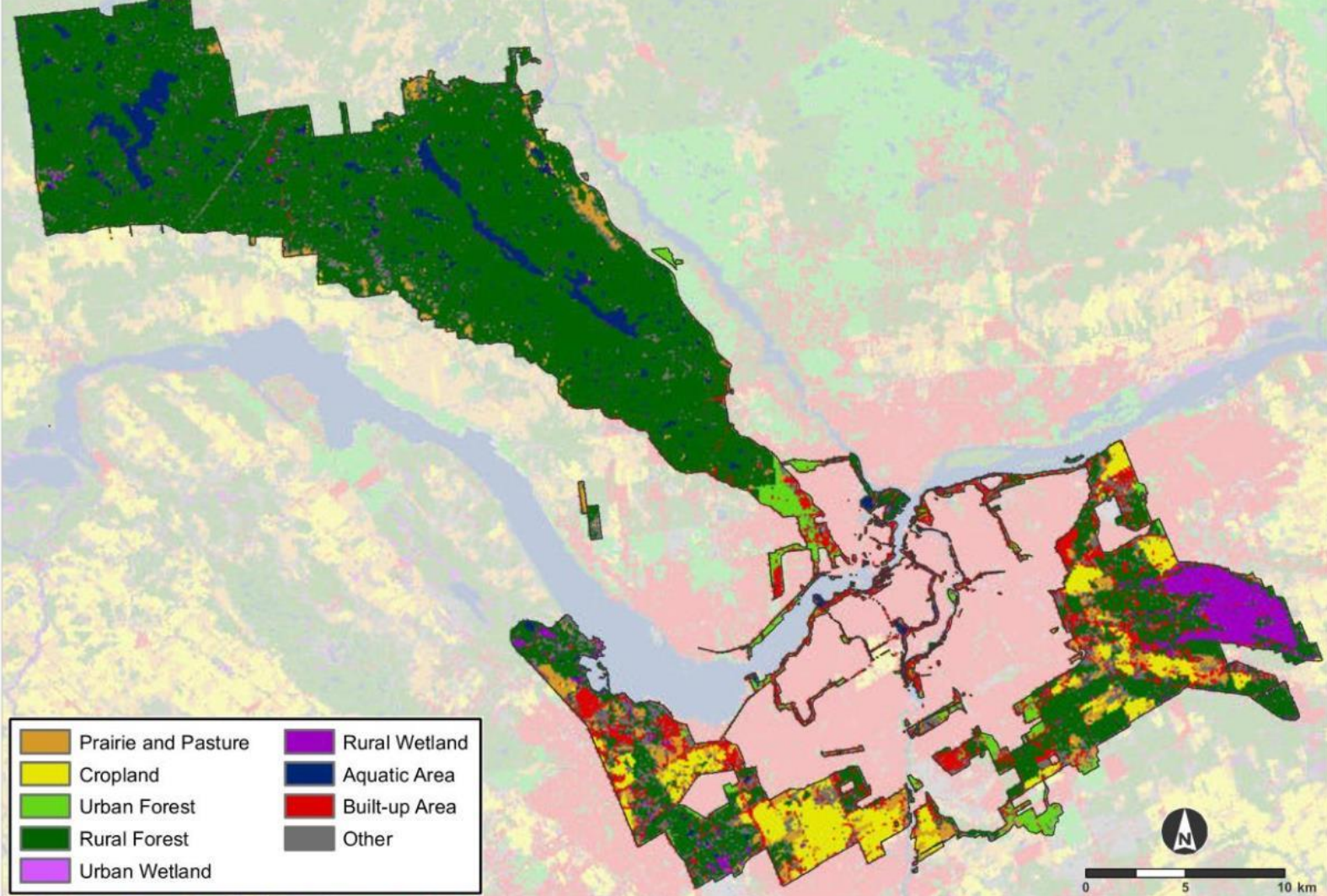












A scenic view of a city skyline across a body of water at sunset. The sun is low on the horizon, creating a bright glow and reflecting on the water. The city skyline is silhouetted against the sky, with several prominent towers and spires. In the foreground, there are trees with autumn foliage in shades of orange, yellow, and red. The overall atmosphere is peaceful and scenic.

Cultural
Services

Regulating/
Supporting
Services

Provisioning
Services

Ecosystem services per year: \$332M

Net present value (20 years): \$5.037B

Wetlands

**\$59,394 /hectare/year
(\$145.7M)**

Rural forests

**\$4,193 /ha/year
(\$159.5M)**

Urban forests

**\$9,352 /hectare/year
(\$14.5M)**

Grasslands, pastures

**\$3,338 /ha/year
(\$7.7M)**

PROVIDED BY THE FORESTS AND WOODLANDS NATIONAL CAPITAL COMMISSION'S GREEN NETWORK							
Urban Forests	Nb. of \$ estimates	Total area [ha]	Min. value		Max. value	Mean (\$ per hectare per year)	St. deviation
Global Climate Regulation	15	1552	6816		14,333	9352	
Air Quality	1		-		-	241	nd
Water Provisioning	1		-		-	554	nd
Waste Treatment	3		-		-	340	233
Erosion Control	1		-		-	140	nd
Pollination	3	203	-		609	211	BT
Biodiversity Habitat	1		-		396	31	BT
Disturbance Prevention	3	111	-		-	160	
Waste Management	2		-		-	-	
Nutrient Cycling	1	444	-		-	-	
	-	4975	7160		-	-	



<http://ncc-ccn.gc.ca/naturalcapital>

