

The wider vision for St Cuthbert's and Carlisle, is to create an integrated strategic green infrastructure network that **weaves** communities and nature together.

The concept draws upon the rich cultural heritage of Carlisle whilst evolving a new identity that focuses on a greener and more sustainable future. Key to that is a subtle shift to put nature at the forefront, with people and places settling into the landscape in a complementary way.

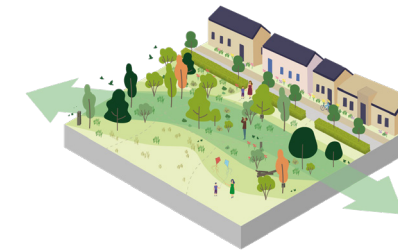
This collaborative approach to the provision of green infrastructure and development is key to the success of the vision. A tonal shift to recognise that a more flexible and naturalistic approach to the design of open space is required - one that works with nature, rather than bending it to an infrastructure led masterplan - is a fundamental principle of **The Weave**.

The second key principle is the recognition that we need to facilitate successful development, and we do need to put people into these places. The challenge is to recognise that a mosaic of habitats can still be packed with all the experiences, spaces and facilities that a traditional park can offer - potentially with a much deeper and richer connection to the landscape and history within which it sits.

Wilding

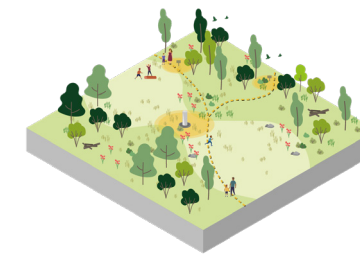
A green strand that weaves through the site, focusing on wildlife, the environment and bringing people closer to nature.

This wild infrastructure will provide a nature recovery network that delivers wildlife enhancements with a climate resilient landscape; to create a truly biodiverse environment.



Experience

Embracing the context, history and character of an area to positively influence the design and place, giving a greater sense of identity and ownership.



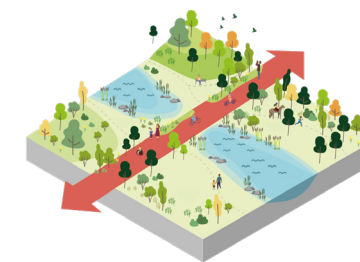
Activate

Key interventions in the landscape that facilitate access to recreation, nature and education within distinctive places that are equitable and inclusive.



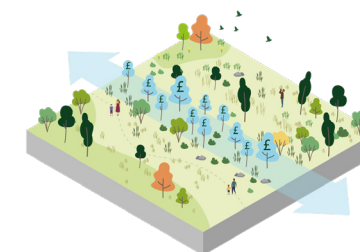
Vitality

The creation of an uninterrupted dedicated cycling and walking network that encourages sustainable modes of travel, whilst optimising multifunctionality and connectivity, to positively respond to the climate emergency.



Economy

Providing opportunities for nature-based solutions to facilitate carbon offsetting through the use of carbon credits and storage, to reduce and neutralise the emissions associated with community use and growth.





The interlocking strands of **The Weave** model are applied to the competition brief area to bring forward **St Cuthbert's Without** - a new multi-faceted, supercharged parkland for Carlisle.

The challenge and focus for **St Cuthbert's Without** is finding a balance between places for nature and biodiversity whilst also providing a viable place for people to live, work and play. It represents a move away from distinct people parks or nature reserves towards something much more balanced and inclusive.

St Cuthbert's Without is the first part of our vision for St. Cuthbert's and Carlisle. This is an exciting realisation of our vision - a vision for an adaptable and future focused approach to resilient, connected, biodiverse development.