

Start with the Park: St Cuthbert's Garden Village Ideas Competition

Competition Brief

July 2021



Contents

1. Foreword from Carlisle City Cllr Paul Nedved

2. Introduction

3. Background

- 3.1. The Garden City Movement
- 3.2. St Cuthbert's Garden Village
- 3.3. Development work so far
- 3.4. St Cuthbert's Local Plan
- 3.5. St Cuthbert's Strategic Design Supplementary Planning Document
- 3.6. Landscape and Townscape Appraisal – St Cuthbert's Garden Village
- 3.7 Towns Deal

4. Design brief

- 4.1. Site context
- 4.2. The site
- 4.3. The Opportunity
- 4.4. Designing The Greenway
- 4.5. Themes

5. Competition Brief

- 5.1. Introduction
- 5.2. Competition structure – Professional
- 5.3. Competition structure - Student
- 5.4. Awards
- 5.5. Entry requirements - Professional and student categories
- 5.6. Stage 1 Judging process
- 5.7. Collaboration
- 5.8. Submission requirements – Professional
- 5.9. Submission requirements – Student
- 5.10. Judging criteria
- 5.11. Timetable
- 5.12. Queries
- 5.13. Other terms and conditions
- 5.14. Reading and Resources

Foreword



"Emerging from the post-pandemic world, St Cuthbert's provides a unique opportunity to rethink how we want to live and redefine the garden village concept for the 21st century. Following the unique 'Start with the Park' approach, we hope to lead the way and are looking for creative designers to work with us on the delivery of innovation in green infrastructure and landscape-led masterplanning.

***'Start with the Park'** is an opportunity to create a resource that could be a visitor destination attraction in its own right and will benefit the residents of all of the Carlisle district. Establishing the 'Greenway' at the outset of St Cuthbert's Garden Village will create a greenspace at the heart of the community and will be a unique selling point. It will also connect the proposed new communities with each other, with the city, and with the surrounding countryside.*

The Greenway also provides an opportunity to look at new ways of delivering cycling and walking infrastructure in Carlisle district to encourage recreational and active travel. A key element of this will be ensuring that this connectivity is both within and beyond the garden village - in particular ensuring active/sustainable transport connectivity to the city centre and the transformational regeneration projects within the southern gateway area of Carlisle such as the railway station improvements, new university campus and business space at the Citadels and Caldew Riverside."

Carlisle City Cllr Paul Nedved

Portfolio holder for Economy, Enterprise and Housing and member of the competition judging panel

Introduction

Carlisle City Council in partnership with the Landscape Institute is launching a two-stage design competition to select an outstanding designer or team of designers to prepare design proposals for a multi-modal Greenway and Park to form the centrepiece of a new Garden Village located to the south of Carlisle. The Garden Village will be known as St Cuthbert's.

St Cuthbert's Garden Village is one of the largest projects of its kind nationally and the largest in the north of England. Emerging from the post-pandemic world, St Cuthbert's provides a unique opportunity to rethink how we want to live and redefine the garden village concept for the 21st century.

From the beginning, 'Start with the Park' led the conversation. Significant site constraints such as the 75-m wide gas pipe easement and the flood risk associated with the river corridors were seen as both major constraints but also unique opportunities. A landscape-led masterplanning approach saw these site constraints as the building blocks of green infrastructure and a way to address issues of connectivity, biodiversity, place-making and surface water design. The focus of this competition, the St Cuthbert's Greenway, is the Garden Village's central greenspace and community park.

It is a project rich with opportunities to explore how landscape and open space can shape the places we want to live in. Following a 'Start with the Park' approach, Carlisle City Council hope to lead the way and are looking for creative designers to work with them on delivering innovation in blue-green infrastructure and landscape-led masterplanning.

The council has partnered with the Landscape Institute and United Utilities as main sponsors to deliver this competition. United Utilities are aware of the role they play to help facilitate development in the North West, whilst tackling the important role water plays in nature recovery and climate change. As a company their approach is to work collaboratively with others to find innovative solutions that will help manage surface water so we can become more resilient to flooding.

"Sustainable Drainage Systems (SuDS) is a key area. By acting and thinking differently we can deliver green infrastructure that not only help slow the flow of water, but create places for nature, which is actually good for people too. It's for this reason we're very supportive of Carlisle City Council's aspirations. This competition provides a great opportunity to attract the best landscape architects to showcase what is possible and we hope that it will help set the tone for the Garden Village to ensure we deliver multiple benefits for the environment and community." Sophie Tucker, Area Engineering Manager, United Utilities.

The competition is open to both professionals and students across a range of disciplines.

This document defines the brief for Stage One of the competition and should be read in conjunction with the attached plans and background documentation. The competition is open to landscape practitioners and students. Three of the practitioners shortlisted from Stage One will be receive an honorarium of £5,000 to go forward to Stage Two. The Stage Two overall winner will receive a £10,000 prize.

Carlisle City Council intends to award a contract for the delivery of the winning scheme. However, whilst landowner negotiations are well underway with positive conversations taking place, should these not be concluded at the time of the competition outcome, there will be a delay to the award of a contract.

The student competition is in two categories:

- Landscape architecture students
- Students of any other discipline

Prizes for the student categories will be awarded on the basis of the Stage One entry. The winners in each category will receive a prize of £1,500. There will also be two runners up for each category selected with a prize award of £500.

3. Background

3.1 The Garden City Movement

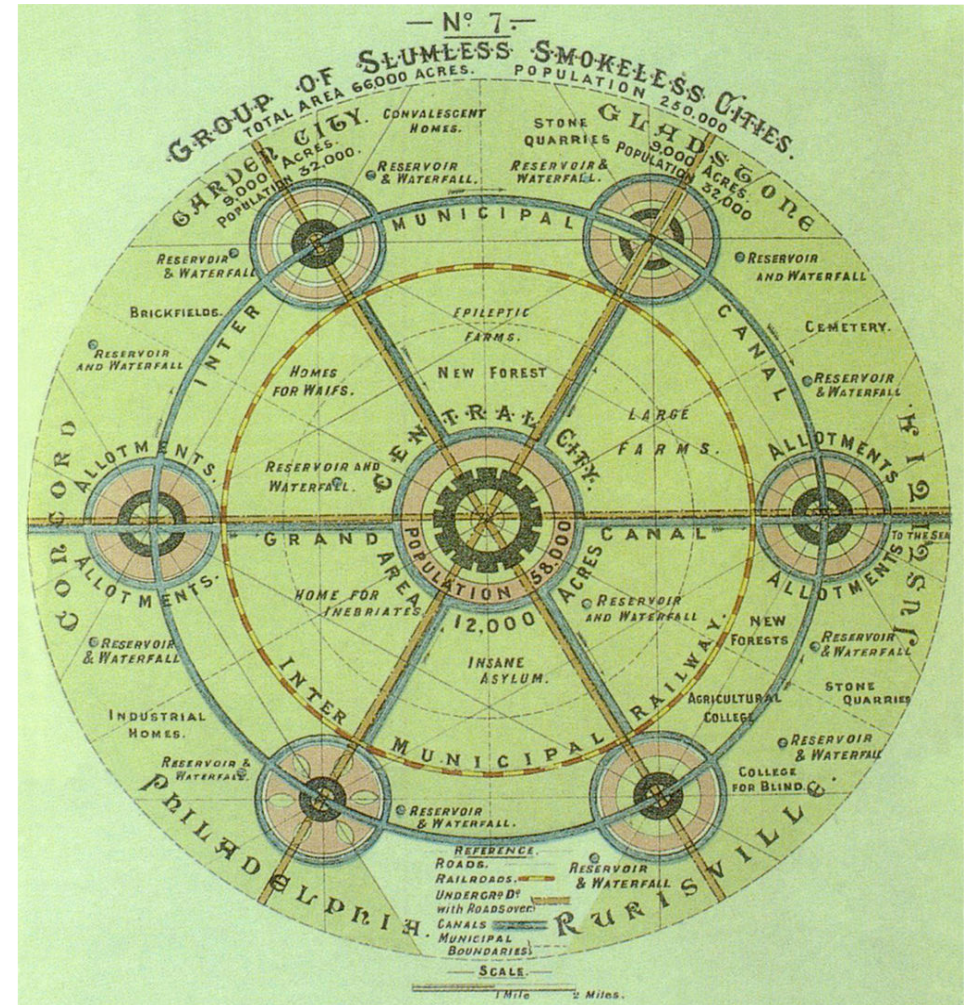
Garden Settlements

Garden Settlements form an important part of Britain's urban development history and have been used to describe a range of smaller new communities built in various forms, in a period stretching from the Industrial Revolution to the modern day. The Garden Cities concept was developed by Ebenezer Howard to deal with the housing, health and social crisis that came out of the rapid boom of cities and towns in 19th century Britain.

The original Garden Cities were founded on a series of principles developed by Ebenezer Howard which remain relevant today:

- Strong vision, leadership and community engagement;
- Land value capture for the benefit of the community;
- Community ownership of land and long-term stewardship of assets;
- Mixed-tenure homes and housing types that are affordable for ordinary people;
- Beautifully and imaginatively designed homes with gardens in healthy communities;
- A strong local jobs offer in the Garden City itself and within easy commuting distance;
- Opportunities for residents to grow their own food, including allotments;
- Generous green space, including a surrounding belt of countryside to prevent unplanned sprawl; well-connected and biodiversity-rich public parks; high-quality gardens; tree-lined streets; and open spaces;
- Strong cultural, recreational and shopping facilities in walkable neighbourhoods;
- Integrated and accessible transport systems.

Further information on garden cities can be found on the [TCPA website](https://www.tcpa.org.uk/).



A diagram of Sir Ebenezer Howard's garden city concept



Welwyn Garden City memorial garden

The New Garden Village

"Locally-led garden towns and villages have enormous potential to deliver the homes that communities need [...] New communities not only deliver homes, they also bring new jobs and facilities and a big boost to local economies."
Housing & Planning Minister Gavin Barwell.

In March 2016, the Government published the 'Locally-led Garden Villages, Towns and Cities' prospectus inviting expressions of interest from local authorities wanting to create new communities that embed Garden City principles.

In January 2017 the Government announced its support for 14 new 'garden settlements' defined as new communities of 1,500 homes and above, of which St Cuthbert's was one. Subsequently, the Government have announced further support through the Garden Communities Project to a total of 49 garden settlements across the UK. The Garden Communities Project is expected to deliver 200,000 properties by 2050.

3.2 St Cuthbert's Garden Village

St Cuthbert's Garden Village was identified as a broad location for growth in the Carlisle District Local Plan 2015-2030 and identified as a major mixed-use development providing up to 10,000 new homes south of the city centre.

The City Council led masterplanning process for the site was developed in two stages. Stage one, completed in February 2019, set out a broad vision, principles and concept for the Garden Village. Stage two, completed in October 2020, established a series of detailed frameworks for St Cuthbert's and defined key principles. The masterplan is being used to inform and shape the St Cuthbert's Local Plan which will provide the statutory planning framework for development in St Cuthbert's.

Just like the original garden communities, St Cuthbert's will be built around a framework that promotes local, diverse and accessible employment, green and healthy living, sustainable active travel routes, well designed and affordable housing and vibrant, diverse and thriving communities. Carlisle recognise that public realm and open space has a key role to play in delivering the garden village vision and it is central to creating places people want to live, work and visit.

A key aspiration of St Cuthbert's Garden Village is that good design is at the heart of all development. To ensure design quality is embedded throughout the life of the garden village, a [Strategic Design Supplementary Planning Document](#), adopted on 6 April 2021, will play a vital role in delivering quality and informing planning negotiations and decisions from the outset.

Start with the Park

A defining feature of garden communities is that they should provide a generous amount of green space. As St Cuthbert's has evolved, Carlisle City Council has committed to a 'Start with the Park' approach. A principle aim of the St Cuthbert's masterplan is that the development of the new communities here will be landscape-led, capitalising on the rivers, world-class views, unique landscape character and connections to the surrounding countryside to create a network of high quality, active landscapes and new neighbourhoods that are distinctly Carlisle. The St Cuthbert's Masterplan Framework aims to create places and spaces for people first and then buildings. In the words of Jan Gehl: *'First life, then spaces, then buildings'*. (*Life Between Buildings: Using Public Space*, by Jan Gehl, 1971)

This Landscape Institute supported competition, sets out to deliver the highest quality green infrastructure and to set the bar for all future open space and public realm across the garden village. [Entrants should consider how their proposals embed the 'Start with the Park' approach and how green infrastructure and public space can meet Carlisle's vision for St Cuthbert's.](#)

3.3 Development work so far

Much work has already been done to analyse and appraise the site, engage with the local community and stakeholders and initiate the design process. This work should be used to inform and guide the development of competition entries. This work is summarised as follows but entrants are encouraged to read the documents in full as well as those available on the [St Cuthbert's website](#).

Stage 1 Masterplan

In November 2017, the City Council appointed Gillespies to assist with initial visioning and masterplanning for the garden village.

Gillespies' team, which included Wayne Hemingway, White Young Green and LSH, worked closely with the council and local stakeholders to develop an ambitious vision and concept masterplan.

The [Stage 1 baseline study](#) sets out key opportunities and constraints that will guide development across the garden village. Key constraints are identified on page 9 of the study and include:

- The 75m wide east-west gas pipe easement was identified as a key constraint and also the opportunity to develop strategic green infrastructure;
- Caldew and Petteril river corridors and flood risk zones identified as opportunities to improve connectivity and recreation/amenity as well as a managed resource to assist with climate resilience;
- Site topography and sensitive views with opportunities to enhance the visual connection to nature and rural living;
- Historic villages and buildings that provide opportunities to create distinctive local character;
- High value landscape assets – woodland, watercourses, field boundaries and public rights of way that can define the placement and character of green infrastructure;
- The Carlisle Southern Link Road (CSLR), an opportunity to enhance connections and transport movement in the garden village.

The [Stage 1 Masterplan](#) established a vision for St Cuthbert's together with the nine key principles which will guide the future development of homes and neighbourhoods and which will define what will make St Cuthbert's thrive.

"St Cuthbert's will provide connected villages embedded in stunning healthy landscapes within the world class setting of the Lake District National Park, the North Pennines Area of Outstanding Natural Beauty and Hadrian's Wall World Heritage Site. A cluster of distinct garden villages set in an attractive recreational, riverside and landscape setting will be well connected to Carlisle and the wider countryside."

St Cuthbert's will actively promote healthy lifestyles providing integrated communities focused around high-quality homes, locally distinctive spaces and inclusive facilities. Innovation and technology will support attractive employment opportunities and exemplary low-carbon living."

The principles build on the established TCPA principles for Garden Settlements and are tailored to ensure they are locally specific to St Cuthbert's as well as taking into consideration current best practice from across the UK and wider world. The nine key principles are:

1. **Start With The Park**
2. Locally Distinctive
3. Quality Homes & Lifetime Neighbourhoods
4. Community Focused
5. Innovative Employment Opportunities
6. Healthy Environments
7. Smart & Sustainable Living
8. Integrated Sustainable Transport
9. Exemplary Delivery & Stewardship

Stage 2 Masterplan Framework

In February 2019, the City Council appointed Arup with Hive Land and Planning to produce the St Cuthbert's Masterplan Framework. This took the concept and vision from Stage 1 to provide a more detailed set of strategic frameworks for the site. It included a detailed development framework for the area, infrastructure schedule and design guidance. The [Stage 2 Masterplan Framework](#) process included three major consultation events, which engaged nearly 2,000 people at various local venues, and online consultation opportunities running alongside.

Conclusions from the evidence base, along with the concept and vision from Stage 1 and findings from public and stakeholder engagement were used to prepare three draft options for a strategic masterplan framework. These options were consulted on between 2 September and 14 October 2019. Production of the Masterplan was completed in 2020 and it is being used as key evidence for the St Cuthbert's Local Plan.

Section 4 of the Masterplan Framework sets out guiding principles for the green and blue infrastructure including the site-wide approach to sustainable drainage (p55-63), habitats (pg. 74-79) and accessibility (pg. 68-69). At the heart of the masterplan is the St Cuthbert's Greenway which this competition focuses on. Further information can be found on pages 70-73 and within Section 3 of the Masterplan Framework Design Guidance.

9 Guiding Principles (Masterplan Stage 1)

9 GUIDING PRINCIPLES



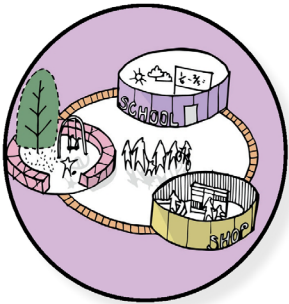
PRINCIPLE 1: START WITH THE PARK
Deliver a landscape-led masterplan that harnesses the rivers, world class views and woodlands to create a network of unique, high quality, active landscapes and new destinations.



PRINCIPLE 2: LOCALLY DISTINCTIVE
Support locally distinctive, design of buildings, streets and spaces to create memorable and unique places to live.



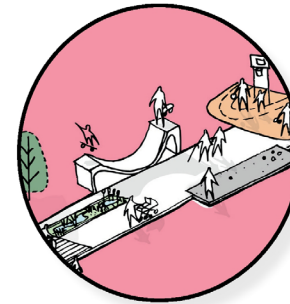
PRINCIPLE 3: QUALITY HOMES & LIFETIME NEIGHBOURHOODS
Promote a mix of high quality homes in distinct and integrated lifetime neighbourhoods.



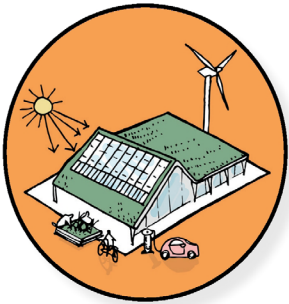
PRINCIPLE 4: COMMUNITY FOCUSED
Focus inclusive communities around a hierarchy of excellent facilities clustered around village centres.



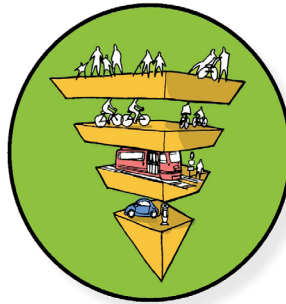
PRINCIPLE 5: INNOVATIVE EMPLOYMENT OPPORTUNITIES
Support a variety of entrepreneurial and creative employment and skills opportunities.



PRINCIPLE 6: HEALTHY ENVIRONMENTS
Promote health and well-being through accessible facilities and healthy lifestyles for all ages.



PRINCIPLE 7: SMART & SUSTAINABLE LIVING
Support low carbon living through sustainable planning, transport and energy.



PRINCIPLE 8: INTEGRATED SUSTAINABLE TRANSPORT
Provide excellent sustainable connections and environments that make walking, cycling and public transport the most attractive method of getting from A to B, making the most of the opportunities presented by the Carlisle Southern Link Road.



PRINCIPLE 9: EXEMPLARY DELIVERY & STEWARDSHIP
Continue to positively engage a range of people and communities in design, delivery and stewardship.

Illustrative Masterplan (Masterplan Stage 2)



3.4 St Cuthbert's Local Plan

The [St Cuthbert's Garden Village \(SCGV\) Local Plan](#) will provide the policy framework for the delivery of the St Cuthbert's Garden Village Masterplan together with the Strategic Design SPD that has been recently adopted. Key to the Local Plan will be a set of strategic objectives underpinned by a suite of planning policies that will guide development within the garden village area. The regulation 18 version of the Local Plan was consulted on in November/December/January 2020/21 and is moving towards Reg 19 in the Autumn. The local plan is proposed to be adopted in 2022.

The natural environment will be key, with the Local Plan containing policies to ensure the areas created within and between the new communities are designed to the highest quality, delivered at the right time, and protected from future harm.

Ahead of the proposed adoption of the SCGV Local Plan the council has produced The Strategic Design Supplementary Planning Document which was adopted 6 April 2021.

3.5 St Cuthbert's Strategic Design Supplementary Planning Document

[Supplementary planning document \(SPD\)](#) amplifies policies in the Carlisle District Local Plan and is consistent with the National Design Guide. In particular, it helps to interpret and articulate the requirements of policies SP3 and SP6, in setting out the Council's expectations for encouraging good quality, comprehensive, landscape-led design in St Cuthbert's Garden Village, appropriate for a Garden Settlement (see Section 4 Policy and Guidance). In line with current and emerging national guidance, the SPD helps to define what is meant by a 'beautiful' development in the context of St Cuthbert's.

3.6 Landscape and Townscape Appraisal - St Cuthbert's Garden Village

The [Landscape and Townscape Appraisal](#) was prepared by LUC in association with Nick Haynes in May 2017. It was commissioned by Carlisle City Council to provide a strategic appraisal of the landscape and townscape character of the Garden Village area.

The study's findings have been integral to the approach taken at St Cuthbert's which aims to integrate the unique and valuable landscape and townscape elements of the Garden Village area. The study provided evidence and guidance that informed the development of the masterplan for St Cuthbert's.

3.7 Towns Deal

In March 2021, the Government announced the successful award of £19.7m Towns Deal funding for Carlisle. The funding will enable the delivery of a range of projects to assist the regeneration of Carlisle City Centre and importantly includes an element to deliver a project focused on 'Start with the Park' - the opportunity to create a park that would be a visitor destination in its own right and a natural capital asset for existing and future residents, together with looking at new ways of delivering cycling and walking infrastructure, connecting St Cuthbert's with Carlisle, the surrounding countryside, and villages in the area. This funding provides the Council with the ability to potentially deliver the winning scheme from this landscape competition. More information on the Towns Deal can be found at: [Carlisle Towns Deal plan](#).



4. Design Brief

St Cuthbert's Garden Village is one of the largest projects of its kind nationally and the largest in the north of England. Emerging from the post-pandemic world, St Cuthbert's provides a unique opportunity to rethink how we want to live and redefine the garden village concept for the 21st century. This is a project rich with opportunities to explore how landscape and open space can shape the places we want to live. Following a unique 'Start with the Park' approach, Carlisle City Council hope to lead the way and are looking for creative designers to work with them on the delivery of innovation in green and blue infrastructure and landscape led masterplanning.

This section describes what we believe can be delivered as a result of the competition. It is not meant to be wholly prescriptive or comprehensive – we want entrants to have the flexibility to apply their knowledge, creativity and expertise to the process of creating an exemplary and innovative design.

The competition comprises of two Stages – with Stage One, together with the Student Competition, seeking concepts to inspire a high quality, multi-functional Greenway as a key coordinating feature for St Cuthbert's. Shortlisted entrants will then be invited, through Stage Two to provide a more detailed proposal for the central section of the Greenway.



Illustration of the Greenway (Stage 2 Masterplan Framework, page 71)

4.1 Site context

The proposal should respond sensitively and creatively to the site context and reflect the unique character of the area in order to create a locally

distinctive design. Entrants should refer to the various background documents and baseline studies set out in Section 2 which will give a comprehensive overview of the local area, immediate site context, opportunities and constraints.

Site Utilities

Entrants are asked to carefully consider the unique constraints associated with the buried gas line and 75m easement as shown on the site plan. Further guidance on works within this utility corridor are listed here:

- [Guidance for temporary pipeline crossings](#)
- [Tree planting guidelines](#)
- [Gas pipeline Durdar](#)
- [Gas pipeline Durdar No 2](#)

4.2 The Site

'The Site' is identified by the red line on the site plan below. This site area encompasses the St Cuthbert's Greenway, the centrepiece of the garden village and key strategic greenspace. *For Stage One, entrants are asked to focus on the red line area and a vision for the Greenway but encouraged to think beyond the site boundary in terms of how the Greenway can support wider aspirations and potential in the garden village.*

4.3 The Opportunity

Carlisle is the City of the Lakes. It is located just south of the Scottish border and is within easy reach of two internationally renowned World Heritage Sites - the Lake District National Park and Hadrian's Wall. It is well-connected being located on the West Coast Mainline and has outstanding countryside, walking and cycling trails within easy reach of the city. In the context of a world emerging from the recent pandemic and people looking for alternative places to live and ways to work, there is huge potential for St Cuthbert's to offer a highly desirable and different place to live. A place that meets the needs of future generations with green and blue infrastructure at its heart.

Stage One is an ideas competition that invites individuals and teams to showcase their visionary thinking. The competition represents a unique opportunity to contribute to the evolving discussion about the way we want to live and what garden villages of the future may look like. It is also an opportunity to demonstrate how public realm, green and blue infrastructure can lead the development of new housing to create better places to live. Successful teams will shape a model approach to designing green and blue infrastructure to integrate with existing and new communities that we hope will lead the way.

Site Plan



Aerial view with focus on east side of the site

Visit the resources page of the website for further photographs indicated by the letters below



Carlisle Racecourse

Blackwell

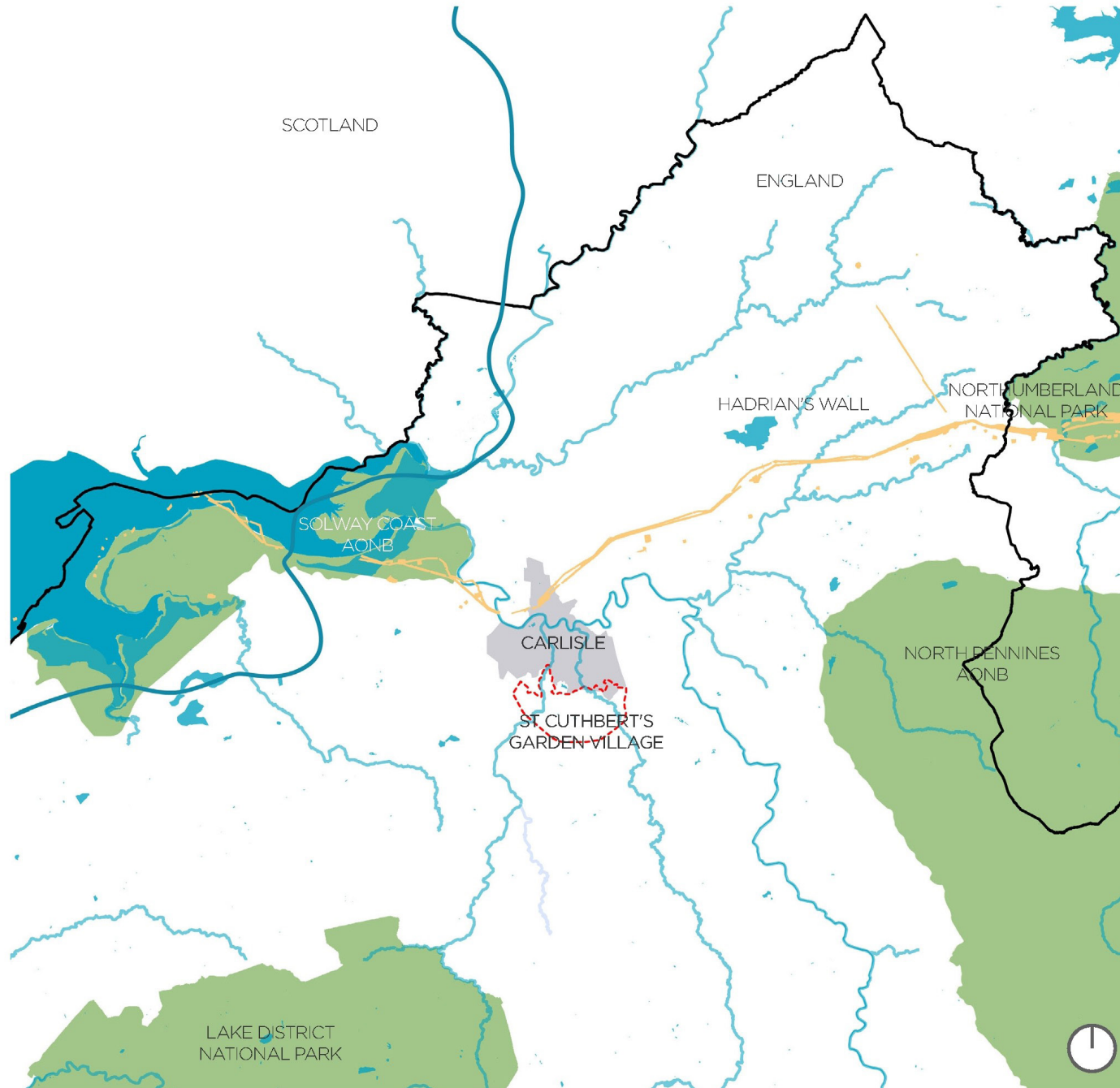
CARLISLE

Scalegate Road

to Newbiggin Road



*St Cuthberts in the wider landscape context
(Stage 2 Masterplan Framework)*



4.4 Designing The Greenway

The competition asks entrants to develop ideas for a central section of the St Cuthbert's Greenway, the garden village's principal public park at the heart of the new community. The competition focuses on the section of Greenway located adjacent to the proposed village centre of Durdar.

The Greenway should:

- Provide a strategic green corridor linking the Caldew and Petteril river valleys;
- Provide a focus for the village centre at Durdar accommodating community activity and multi-functional public spaces that meet the needs of a diverse community;
- Address the ultimate wider aim of connecting the whole place including improved links to the village centres of Cummersdale and Carleton and connect along the edge of the city, uniting proposed and existing communities with the river corridors;
- Enhance and encourage wildlife;
- Promote pedestrian and cycle movement as the primary mode of transport and provide a walking and cycling loop around the Garden Village;
- Make connections to existing walking and cycling routes including the Carlisle Southern Link Road (CSLR);
- Have destinations along its length that provide attractive recreational opportunities for residents and city visitors;
- Accommodate major open space provision co-located close to schools and village centres, enabling sharing of facilities such as car parking and welfare facilities;
- Consider management and maintenance and explore creative solutions for maintaining quality in the long term;
- Give consideration to permissible works within the utility corridor.

4.5 Themes

In addition to the Garden Cities principles, eight themes have been identified through dialogue with Carlisle City Council. The entries should encompass these themes into an innovative, informed and well considered scheme.

1. Connectivity

Entries should demonstrate:

- How they provide for good connectivity within and across the Garden Village;

- How they provide for good links with Carlisle city centre, the surrounding countryside and existing Public Rights of Way (PROW);
- How sustainable modes of transport such as cycling and walking are encouraged through good design.

2. Green infrastructure

Entries should demonstrate:

- Multi-functionality – spaces that work hard for both people and the environment;
- How proposals will provide for a Biodiversity net gain and enhancements to natural capital;
- How they respect and enhance the character and distinctiveness of the area's habitats and landscape types making the most of local topography and views;
- How trees can be accommodated within the utility corridor and the whole space.

3. Sustainable Drainage

Entries should demonstrate:

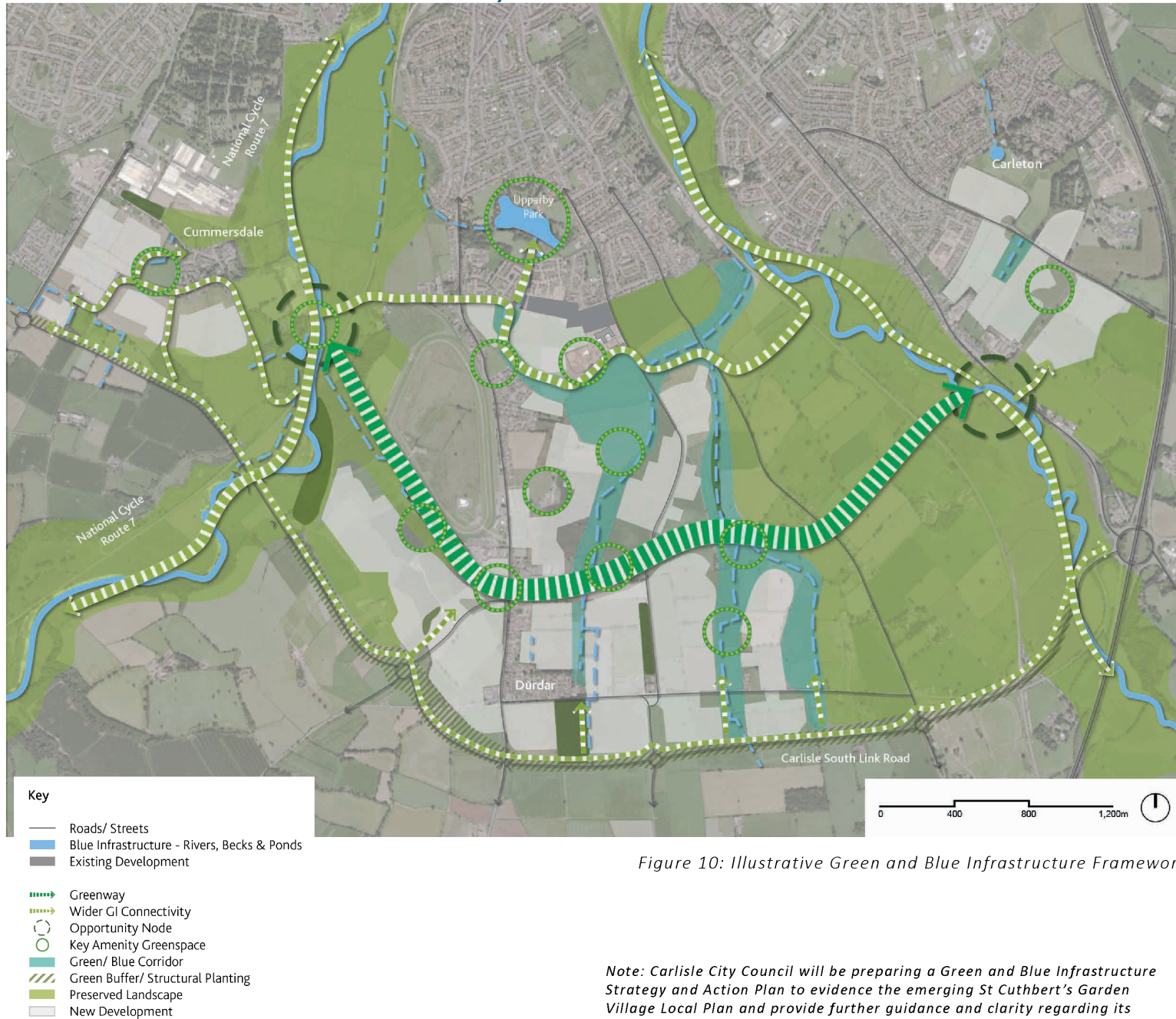
- How they maximise the benefits of SuDS and mitigate the risk of the negative impacts surface water runoff can have, recognising rain is a valuable resource and opportunity. Please demonstrate how you:
- Mimic natural drainage;
- Provide interception;
- Maximise volume losses;
- Reduce risk of pollution within development and to the wider environment;
- Manage rainfall at or close to the surface;
- Benefit the local community;
- Support biodiversity;
- Reduce flood risk;
- How they provide a holistic sustainable drainage strategy, specifically related to St Cuthbert's;
- How they connect to and enhance existing blue assets.

4. Climate change resilience

Entries should demonstrate:

- How the design is resilient to changes in weather patterns and other effects of climate change;
- How the proposal may help to meet the City Council ambition to be zero carbon by 2030;
- How proposals embed sustainability and low carbon principles into the design.

Illustrative Green and Blue Infrastructure Framework showing the Greenway and connections to wide GI



Illustrative Open Space Layout showing location and character of the Greenway and potential uses and connections to surrounding development



5. Interface with the surrounding environment

Entries should demonstrate:

- How they provide a positive interface with the adjacent built environment such as housing, schools, farmland and commercial development;
- How highways and movement corridors are integrated in proposals;
- How surrounding farmland and the rural nature of St Cuthbert's can be expressed through public realm design;
- How they create a positive, attractive and complementary setting for built development and in particular, how the Greenway addresses the proposed village centre at Durdar;
- How they complement adjacent uses whilst incorporating safer by design principles.

6. Health and wellbeing

Entries should demonstrate:

- How different types of activity are encouraged by and integrated into the design;
- How new communities can be encouraged to make healthy lifestyle choices;
- How community food production in all its forms could be integrated into the design;
- How a connection with nature and natural landscapes is promoted as part of the design;
- How the proposal can deliver other health and wellbeing benefits for the community.

7. Inclusive and accessible

Entries should demonstrate:

- How designs promote equality and encourage social cohesion;
- How they are accessible and attractive to all;
- How proposals will meet the diverse needs of the new community;
- How issues of adaptability are addressed including how communities of the future may want to live and how places can support 'cradle to grave' living;
- How they can provide facilities for the wider community as well as the occupants of the new garden village.

8. How the proposals might encourage a sense of ownership to aid with long-term management and maintenance

- Identity, distinctiveness and sense of place
- How they reflect local culture and history;
- How they are distinctive and place specific.

5. Competition Process

5.1 Introduction

There are two categories for the competition – professional and student. Whilst the overall brief is the same, the focus of entries is different.

5.2 Competition structure - Professional

The professional competition will follow a two stage process. This document constitutes the brief for Stage One of the competition. The brief for Stage Two will be issued to the three strongest entrants as selected by a judging panel.

Stage One

The first stage competition is for conceptual ideas focused on the Greenway and central park area but with reference to wider site aspirations. Stage One will invite a broad range of entrants with freedom to communicate visions and ideas. We would like you to excite us with your concept, your understanding of the site and the ability, creativity and innovation of your team.

There will be no formal site visit for Stage One, however, entrants are welcome to visit the site should they wish. We ask that any visits are conducted with respect for landowners and that only Public Rights of Way are used for access.

An online Q & A session hosted by a representative of the Landscape Institute will be available on **Tuesday 17th August at 2pm.**

Stage Two

Stage Two will be offered to the three strongest entries. Stage Two will invite entrants to develop their proposals for the Greenway in more detail. It is intended that the winning entry will form the basis for the future design and implementation of the Greenway.

5.3 Competition structure - Student

The student competition will be one-stage. It will be run in two categories:

- Students of landscape architecture
- Students of any other discipline

The student competition will respond to the question:

“If St Cuthbert's is to ‘start with the park’ how would you design the park to ensure that it is the heart of the garden village.”

We would like you to illustrate your ideas for how a new central park and Greenway will inspire a different way of living across St Cuthbert's, as a community of the future, based on healthy living and access to high-quality green and natural spaces. Entrants can be landscape architecture students or students of any other discipline.

You need to be able to express your ideas creatively in writing, with illustrations or photography etc. Student submissions do not need to be constrained by any restrictions such as current planning law, land ownership, budgets or technological advances.

Some key questions to consider:

- What would a central park of the future look like, so that it creates a place everyone in St Cuthbert's and Carlisle wants to visit?
- How can the St Cuthbert's Greenway help you live in your ideal way, particularly in terms of access to fantastic open space and healthy living?
- What new technologies should the garden village and Greenway embrace?
- What does a typical ‘day in the life of’ look like and how could the Greenway enhance this?
- How can the new garden village and its open spaces create a lifestyle and way of living that would encourage you to stay local (if you reside in Carlisle) or move to Carlisle (if you are not)?
- How can issues around climate emergency be addressed by the park?
- What new ideas can you bring to St Cuthbert's Garden village around sustainable drainage, civic pride, sustainable transport, biodiversity and productive landscapes?

This list of questions is not exhaustive but designed to stimulate thought and generate responses. Feel free to expand these questions and develop your ideas around garden villages of the future.

5.4 Awards

Awards - Professional category

Each of the three entrants selected to progress to Stage Two of the competition will be awarded an honorarium of £5,000 to complete the entry.

The winner of the professional category will receive a £10,000 cash prize. It is the intention of Carlisle City Council to award a contract for the delivery of the winning scheme. However, whilst landowner negotiations are well underway with positive conversations taking place, should these not be concluded at the time of the competition outcome, there will be a delay to the award of contract.

5.5 Entry requirements - Professional and student categories

The competition is open to two categories of entrants – professional and student. These are defined as follows:

Professional category criteria

Entries in the professional category are invited from the following:

- Individual landscape architects who are members of the Landscape Institute or a similar professional body;
- Members of a landscape practice registered with the Landscape Institute or a similar professional body.

Collaborations are encouraged between landscape practitioners and other built environment professionals or people from the creative industries but no specific qualifications or memberships are required to enter.

Awards - Student category

There will be two winners selected, one from each category set out below. Each will be awarded a prize of £1,500 each. There will also be two runners up for each category selected with a prize of £500. The student entries will be divided into:

- students of landscape, architecture, design or other related undergraduate/post graduate studies;
- other undergraduate/post graduate courses.

Student category criteria

Entries in the student category are invited from the following:

- Individual students or teams of students, with teams made up of individuals currently registered on graduate and/or postgraduate courses of varying disciplines. Multidisciplinary teams that incorporate artists and engineers are particularly encouraged.

5.6 Stage One Judging process

A panel has been appointed to judge the Stage One entries. The panel includes experts in sustainable landscape design, stakeholders and members of the client team. The panel and judging process will be managed by the Landscape Institute Competitions Office. Unsuccessful entrants will be notified and feedback offered on request.

5.7 Collaboration

Successful placemaking requires a range of knowledge and expertise to understand and realise the opportunities offered by the site and brief. To achieve this, it is recommended that entrants should form a team that reflects the skills required to respond creatively to the unique opportunities presented by the site and brief and to deliver an exemplary scheme. Successful collaboration will facilitate the creation of an innovative and multi-functional piece of green infrastructure. We are not prescribing what skills are required to afford each team the flexibility to respond to the brief in their way. However, the skills should reflect the themes of the competition which are explained below.

5.8 Submission requirements – Professional

To enter the St Cuthbert's Garden Village Competition, entrants are required to submit their electronic entries via <https://competitions.landscapeinstitute.org/st-cuthberts/>

Entries shall consist of a design statement and drawings which describe and illustrate the proposal.

All submitted material must include:

- Name of entrant or team.
- Name of entry

a. Design statement

Max size: 6 sides A4. 10pt text. To be submitted as PDFs no larger than 100MB.

The design statement should:

- Include the title of your idea, a description of the proposal and the rationale behind its development. It should explain how the proposal complies with the brief and how the eight themes have been explored and delivered within the design;
- Demonstrate an understanding of the site and brief. It should show that the entrant appreciates the constraints and opportunities offered by the project;
- May describe how the proposal is innovative – how it goes beyond the brief and incorporates new thinking or ideas not specifically mentioned within the brief;
- Introduce the entrant and their team. It should describe their experience relevant to this project. It should demonstrate that they have the experience and passion to be able to deliver an exemplary scheme.

b. Drawings

Max size: Up to two A3 sheets. To be submitted as PDFs no larger than 100MB.

Included on the sheets should be:

- A visual representation of your idea including at least one plan view;
- Supporting text, diagrams, images and/or sketches to demonstrate the design rationale and how the proposal complies with the brief and delivers on the eight themes. Precedent images may be used but must be clearly labelled as such;
- The sheets can be presented landscape or portrait.

Any submissions that do not meet all submission requirements will not be eligible for entry to the competition.

5.9 Submission requirements – Student

To enter the St Cuthbert's Garden Village Competition, entrants are required to submit their electronic entries via <https://competitions.landscapeinstitute.org/st-cuthberts/>

Up to two A3 sheets. To be submitted as PDFs no larger than 100MB.

Included on the sheets should be:

- A visual representation of your ideas, this can be in any medium - painting, drawing, collage, photography, CAD drawing, storyboard, other;
- A statement of no more than 2000 words which includes the title of your idea, description of the proposal and how your idea addresses the question set out above.
- The design statement should demonstrate an understanding of the St Cuthbert's site and brief. It should show that the entrant appreciates the constraints and opportunities offered by the project;
- Your name and College / University;
- The sheets can be presented landscape or portrait.

Any submissions that do not meet all submission requirements will not be eligible for entry to the competition.

5.10 Judging criteria

- Innovation and creativity (25%)
- Quality of and approach to design (25%)
- Response to the brief and site context (50%) and in particular how the proposal responds to the 8 key themes:

Theme

1. Connectivity
2. Green Infrastructure
3. Sustainable Urban Drainage
4. Climate change resilience
5. Interface with the built environment
6. Health and wellbeing
7. Inclusive and accessible
8. Identity, distinctiveness and sense of place

5.11 Timetable

The competition will follow the following timetable:

Phase/Activity	Date
Competition launch	- 12 July
Q&A Session with LI and Carlisle	- 17 August
Deadline for Stage 1 Submissions	- 10 September
Judging	- 14 September - 24 September
Shortlisted entrants notified	- Week commencing 27 September
Unsuccessful entrants notified	- Week commencing 27 September
Stage 2 brief issued to shortlisted entrants	- October 4
Deadline for Stage 2 Submissions	- 26 November
Judging	- 29 November – 9 December
Winners announced	- Week commencing 17th January

Entrants must familiarise themselves with the timetable. Please ensure that you leave enough time for the submission process as late entries will be disqualified.

5.12 Queries

Queries should be emailed to Competitions@landscapeinstitute.org

Queries shall be answered and the response posted onto the competition website.

Entrants are encouraged to view the website regularly for updates together with the St Cuthbert's Garden Village web site www.stcuthbertsgv.co.uk

5.13 Other terms and conditions

The ownership of Copyright in the work of all participants in the competition will by default remain with the applicant or other author of the work, as per the Copyright, Designs and Patents Act 1988. However all entrants, by submitting their design, allow an irrevocable royalty-free licence to the Landscape Institute to use the materials in an online or live exhibition and other activities relating to the competition.

The decisions of the judging panel in all matters relating to this competition will be final.

In the event of a member of the judging panel being unable to act through illness or any other cause, the organisers may appoint a replacement.

The organisers reserve the right to change the timetable at any time. The organisers reserve the right to change the parameters and programme for the competition and may choose not to select a winning team or appoint a team to take their proposals forward.

The organisers will not be held responsible for any costs incurred.

Entrants may enter multiple projects. So long as each entry is a unique one, you may enter as many times as you like.

5.14 Reading and Resources

We would draw the entrants attention to the St Cuthbert's Garden Village website which includes all work completed to date and a comprehensive baseline assessment.

<https://www.stcuthbertsgv.co.uk/>

The following are key documents for review:

St Cuthbert's Garden Village Landscape and Townscape Appraisal: <https://www.stcuthbertsgv.co.uk/EVIDENCE-BASE>

Draft St Cuthbert's Local Plan: <https://www.stcuthbertsgv.co.uk/LOCAL-PLAN>

St Cuthbert's Strategic Design Supplementary Planning Document: <https://www.stcuthbertsgv.co.uk/DESIGN-SPD>

St Cuthbert's Masterplan Stage 1 (Gillespies): <https://www.stcuthbertsgv.co.uk/MASTER-PLAN/Masterplan-Stage-1>

St Cuthbert's Masterplan Stage 2 (ARUP): <https://www.stcuthbertsgv.co.uk/MASTERPLAN/MASTERPLAN-Stage-2>

Other Local Information:

Carlisle District Local Plan 2015-2030 (Policy SP3 and SP6 of relevance): <https://www.carlisle.gov.uk/planning-policy/Adopted-Plans/Carlisle-District-Local-Plan-2015-2030>

St Cuthbert's Southern Link Road: <https://www.cumbria.gov.uk/csrl/>

Garden Cities:

Understanding Garden Villages: An Introductory Guide

<https://www.tcpa.org.uk/understanding-garden-villages>

<https://www.tcpa.org.uk/Handlers/Download.ashx?IDMF=3507c991-fde2-4218-8920-641416f521b5>

<https://www.tcpa.org.uk/Pages/Category/garden-cities>



Carlisle City Council

Carlisle City Council aims to improve the health, wellbeing and economic prosperity of the people of Carlisle. They want to ensure that Carlisle grows in a way that creates quality homes and is properly planned across the coming decades. Therefore, the ambition is that St Cuthbert's will be a very high-quality new settlement, delivering a significant number of new homes and job opportunities, all within a superb landscape and environment that will transform Carlisle. <https://www.carlisle.gov.uk/>



St. Cuthbert's Garden Village Carlisle

St Cuthbert's secured Garden Village status in January 2017 and is the largest of the Garden Villages in the north. Led by Carlisle City Council, the garden village team has worked extensively with local communities, key stakeholders and the extensive range of private landowners for over three years to develop the proposals. St Cuthbert's will meet the need for sustainable housing growth over the next 30 years, making Carlisle the place of choice for those wishing to feel the benefits of living in the countryside with the convenience, connectivity and opportunities of a major city. The garden village 'Starts with the Park' where the delivery and long term stewardship of the green and blue infrastructure will encourage a new healthier way of living, enhancing the health and well-being of both future residents of St Cuthbert's and the existing population of Carlisle. <https://www.stcuthbertsgv.co.uk/>



HM Government

Towns Fund - Town Deals

On 27 July 2019, the Prime Minister announced that the Towns Fund would support an initial 101 places across England to develop Town Deal proposals, to drive economic regeneration and deliver long-term economic and productivity growth. A Town Deal is an agreement in principle between government, the Lead Council and the Town Deal Board. It will set out a vision and strategy for the town, and what each party agrees to do to achieve this vision. Carlisle projects will benefit from £19.7 million government funding, as part of the city's Town Deal Investment Plan. This offer has now been agreed by the Town Deal Board, and will fund several projects including: Start with the Park, St Cuthbert's Garden Village: Providing new and improved walking and cycling routes connecting the key settlements of the Garden Village with Carlisle City Centre. <https://www.gov.uk/business-and-industry/city-deals-and-growth-deals>



United Utilities

United Utilities is responsible for water and wastewater services in the North West of England, and as part of this service, delivers 1.8 billion litres of water to more than 3 million homes and businesses. Their purpose is to provide great water and more for the North West; driving them to deliver their services in an environmentally-sustainable, economically beneficial and socially responsible manner. Providing more means creating value for our stakeholders and understanding what matters to them through strong and constructive relationships. <https://www.unitedutilities.com/>



Landscape Institute

The Landscape Institute (LI) is the chartered body for the landscape profession. It is an educational charity that promotes the art and science of landscape practice. The LI provides a professional home for all landscape practitioners including landscape scientists, landscape planners, landscape architects, landscape managers and urban designers. The Landscape Institute supports their members through advocacy programmes, events and numerous networking activities, many of which are organised through their branches across the UK. <https://www.landscapeinstitute.org/>